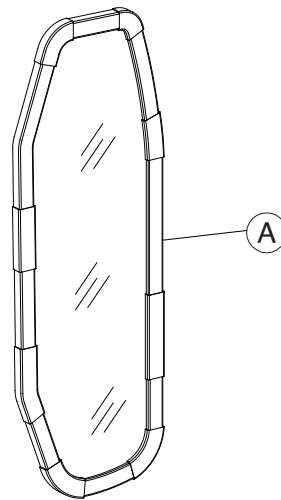


ASSEMBLY INSTRUCTIONS

Please read the instructions carefully for correct and safe assembly.

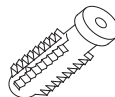
1

(A) MIRROR x1



2

01 NYLON WALL PLUS



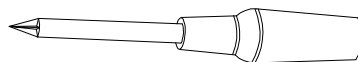
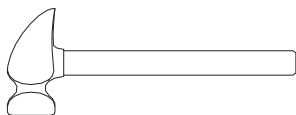
x02

02 SCREW (Ø4x38)



x02

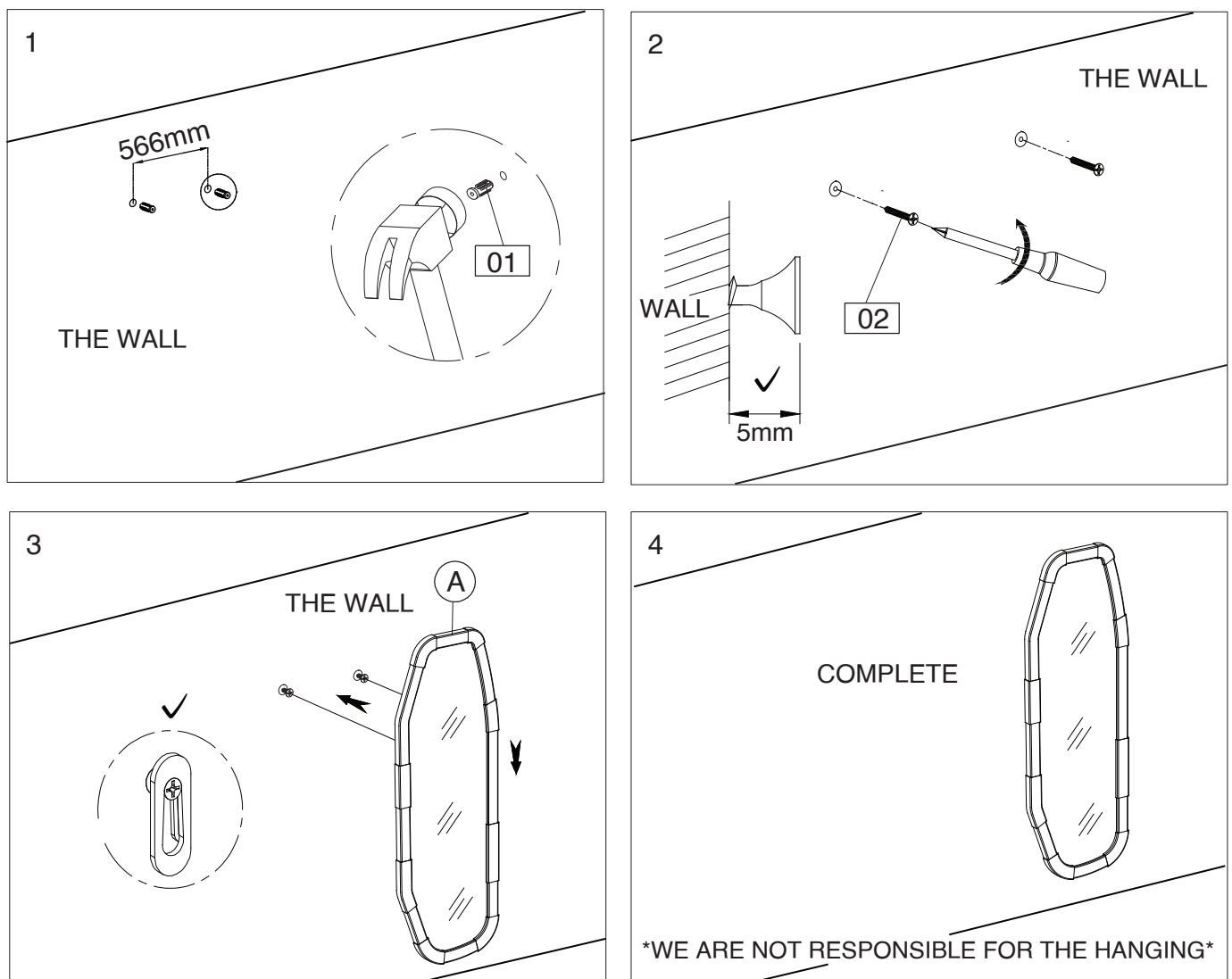
Phillips head screwdriver tool needed (not include)



Thank you for
purchasing this
Zuiver product.

ASSEMBLY INSTRUCTIONS

Please read the instructions carefully for correct and safe assembly.



Thank you for
purchasing this
Zuiver product.

FURNITURE TIPPING RESTRAINT FOR MIRROR REVERSE

Young children may be injured by tipping furniture and the use of a tipping restraint is highly recommended.

When properly installed, this restraint could provide protection against the unexpected tipping of furniture due to small tremors, bumps or climbing. We recommend mounting this restraint to a wall stud.

WARNING: This product is only a deterrent. It is not a substitute for proper adult supervision.

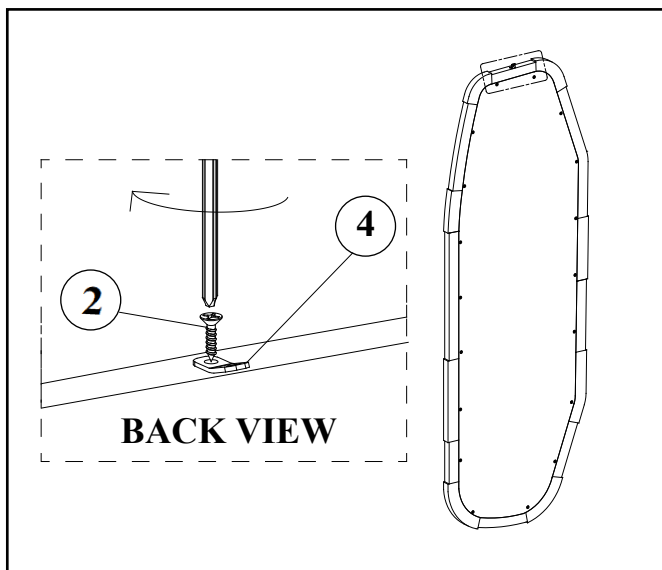
TIPPING KIT CHECK LIST

CODE	COMPONENT	QTY
01	PLASTIC STRAP	1
02	SCREW	2
03	NYLON WALL PLUG	1
04	METAL BRACKET	2

Installation Instruction:

1. Attach one of the mounting brackets securely near the top back edge of the furniture piece by inserting the screw (02). Refer to picture A.
2. Determine the final position of the furniture piece. Mark location on the wall approximately 2" above the bracket mounted to the back of the furniture.
3. Drill a starter hole into the wall stud. If wall stud is not available, drill a hole into the wall and insert nylon wall plug(03). Gently tap nylon wall plug until the flange of it is flush with the wall.
4. Attach the second bracket by inserting and securing the screw to the wall. Refer to picture B.
5. Align the two brackets.
6. Thread the strap (01) through both brackets (04) and tighten until snug.
7. Check to make sure that the brackets are firmly installed the strap is secure.

A



B

